



# IH20

## 2D Wired Barcode Scanner

Strong decoding performance

Super long scan distance

Light and stylish design



1D/2D



Mobile payment



Auto



Plug and play



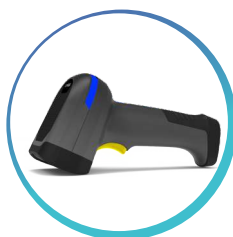
32Bit ARM



1280x800Pixel

### Features

- Light and stylish design, comfortable use experience
- Strong decoding capability on small and difficult barcodes (blurred, wrinkled, low contrast and high density barcodes)
- 1280x800 pixels high performance image sensor, quickly and accurately capturing barcodes
- Support multiple interfaces, USB HID, USB-VCOM and RS-232
- Easy upgrade to support function expansion



### Applications



### SUNLUX IOT TECHNOLOGY (GUANGDONG) INC.

Office Add: Room 1201, Building A, No.76 Xinye Road, Huangpu District, Guangzhou, 511356, China  
Tel: +86-20-32053765 Fax: +86-20-82115390 Website: [www.xl-scan.com](http://www.xl-scan.com) E-mail: [overseas01@xl-scan.cn](mailto:overseas01@xl-scan.cn)

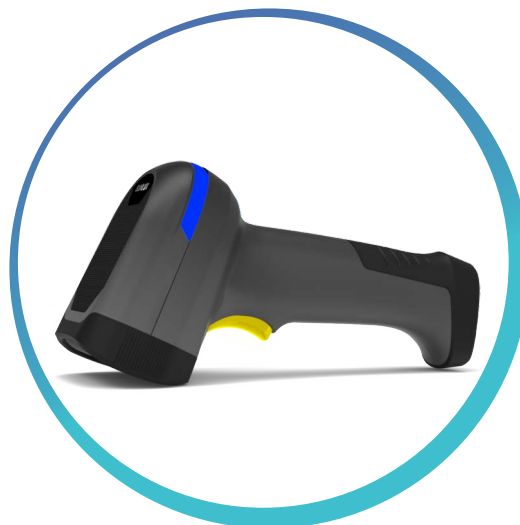


# IH20

## Technical Parameters

### Performance Parameters

CPU	32-bit ARM
Light Source	White LED Lighting, Laser aiming
Scan Mode	Manual & Automatic
Image Size	1280x800 Pixel
Scan Speed	60 fps
Minimum Resolution	≥3mil
Depth of Field	40~470mm (13mil EAN13 PCS=90%)
Print Contrast	≥15%
Interface	USB, RS232
Indicator	LED Indicator and Buzzer
Field Angle	Horizontal 40.6°; Vertical 30.4°
Decoding Capability	1D: Codabar, Code11, Code39, Code32, Interleaved 2 of 5, Industrial 2 of 5, Matrix 2 of 5, Code93, Code128, UPC-A, UPC-E, EAN 8, EAN 13, GS1 DataBar(RSS14), Matrix 2 of 5, Standard 2 of 5 2D: PDF417, Micro PDF417, QR Code, Micro QR, Data Matrix, Aztec Code, MaxiCode



### Other Parameters

Size	L × W × H: 94.2×76.4×184(mm)
Weight	260g(including cable) , 171g(without cable)
Case Material	ABS+PC+TPU
Input Voltage	DC 5V
Working Current	280mA
Stand-by Current	42mA
Cable	Straight 1.8m
Temperature (Operating)	-10~50℃
Humidity	5% to 95% (non-condensing)
Temperature (Storage)	-20~60℃
Light Levels	0~100,000 Lux

### Depth Of Field Performance

Barcode category	Minimum(mm)	Maximum(mm)
Code 39 4mil	40	200
Code 39 8mil	40	400
Code 39 13mil	70	540
Code 39 20mil	80	600
EAN 13 4mil	50	180
EAN 13 8mil	30	340
EAN 13 13mil	40	470
EAN 13 20mil	60	600
Code 128 4mil	40	170
Code 128 8mil	30	310
Code 128 13mil	10	480
Code 128 20mil	60	600
QR 6mil	50	150
QR 15mil	10	300
QR 20mil	50	400
QR 45mil	60	600

\*IH20-10/24B-V.1.0.0

