

## XL-9010

### Portable Bluetooth Wireless Barcode Scanner

2.4G Wireless + BT 4.2

Mini size and pocket design



2.4G



Bluetooth



ARM



1D/2D



Mobile payment

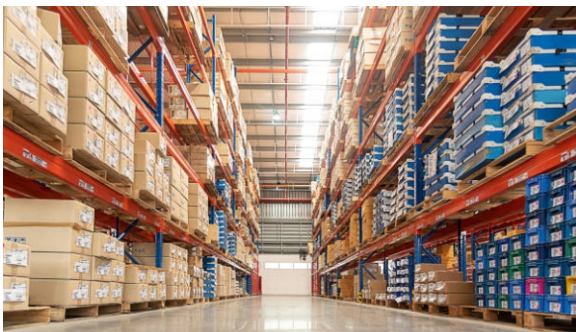


1.5M

## Features

- With 16M memory, can store up to 26 million characters
- Widely be used in warehouse, logistics, retail store, library, pharmacy
- Support firmware online upgrade, to meet the different requirements
- Mini size and pocket design. Easy to operate and carry. Fashionable and stylish
- 3 in 1 connection modes, 2.4G wireless, BT4.2, USB wired, meet your various needs
- 1500mah large capacity battery, 4 hours of charging for 15 hours of continuous scanning
- Work with smart phones, tablets, PC based on windows XP/7/8/10/WinCE, Android, iOS system

## Applications



**SUNLUX IOT TECHNOLOGY (GUANGDONG) INC.**

Office Add: Room 1201, Building A, No.76 Xinye Road, Huangpu District, Guangzhou, 511356, China

Tel: +86-20-32053765 Fax: +86-20-82115390 Website: [www.xl-scan.com](http://www.xl-scan.com) E-mail: [overseas01@xl-scan.cn](mailto:overseas01@xl-scan.cn)



# XL-9010

## Technical Parameters

Performance parameter			
Model	XL-9010 (CCD XL-1125V1)	XL-9010 (2D XL-3090Z)	XL-9010 (2D XL-3020GSQ)
Code reading type	1D, on paper/screen	1D/2D, on paper/screen	1D/2D, on paper/screen
Image sensor	CCD (XL-1125V1)	CMOS (XL-3090Z)	CMOS (XL-3020GSQ)
Light source	Red LED	White LED (lighting) XL-3090Z Red aiming light	White LED (lighting) XL-3020GSQ Red laser aiming
CPU	ARM	ARM	ARM
Image size	1500Pixel	640x480Pixel	640x480Pixel
Scanning speed	Up to 300 times per second	30fps	60fps
Mnimum resolution	≥4mil	≥4mil	≥3mil
Decoding depth	50~260mm	65~270mm (13mil PCS90%)	60~460mm (13mil PCS90%)
Print Contrast	≥20%	≥25%	≥20%
Scanning angle	Rotate 30°, tilt 55° Deflect 65°	Deflection 360° Inclination ±65° Rotation ±60°	
Scan mode	Manual Trigger / Continuous Scanning	Manual trigger & Automatic induction	
Memory	16M, can store 26 million characters		
Decoding capability	Industrial 2 of 5, Standard 2 of 5,  Interleaved 2 of 5, Matrix 2 of 5, Codabar,  MSI, UK/Plessey, Code 93, Code 39,  UPC-A, UPC-E,EAN 13,EAN 8,  Code 128,GS1	1D: UPC-A, UPC-E, EAN-8, EAN-13, Code 128, Code 39, Code 32, Codabar(NW-7) , Interleaved 2 of 5, Matrix 2 of 5, Industrial 2 of 5, Standard 2 of 5(IATA), Code 11, MSI Plessey  2D: QR Code, Micro QR Code, Data Matrix, PDF 417	1D: Codabar, Code11, Code39, Code32, Interleaved 2 5, Industrial 2 5, Matrix 2 5, Code93, Code128, GS1-128, UPC-A, UPC-E, EAN 8, EAN 13, GS1 DataBar (RSS14) , GS1 DataBar Limited, GS1 DataBar Expanded,etc  2D: PDF417, Micro PDF417, QR Code, Micro QR, Data Matrix, Aztec Code

Other parameters	
Size	Scanner: L*W*H= 110*40*18.6(mm) Receiver: L*W*H= 18*14*6(mm)
Weight	66 g
Material	ABS+PC
Working current	185 ma
Quiescent current	85 ma
Charging method	TYPE-C USB
Input voltage	DC5V
Charging time	4 hours
Battery	Non-removable rechargeable lithium battery, 1500mAh
Standby time	6 months (Dormant state)
Indicator	Ring LED indicator light, buzzer
Interface	USB, USB-VCP
Communication methods	2.4G, bluetooth
Continuous working time	15 hours
Temperature (operating)	-10°C~50°C
Temperature (storage)	-20°C~60°C
Humidity (operating)	Relative humidity 5%-95%(no condensation)
Light Source	0-100,000Lux
Drop test	1.5meter

Wireless performance parameter	
2.4G	
Frequency	2.4GHz
Communication distance	> 100m (open space)
Bluetooth	
Version	4.2
Interface	HID, BLE, SPP
Communication distance	10m (open space)



\*XL-9010-V1.22.06